

**NEW**



**2018 LUXURY**

# GTX LIMITED 230 / 300

## LIVING ROOM ONBOARD

The new design makes hanging out just as fun as riding around.

## INGENIOUS STORAGE

All your gear is now within arm's reach.

## MUSIC ONBOARD

With the industry's first manufacturer-installed, truly waterproof, Bluetooth<sup>1</sup> audio system.

## REVOLUTIONARY STABILITY

The new industry standard for stability.



Liquid grey Metallic / Equestrian Brown ●

**iTC / iBR / ST<sup>3</sup> / CLCS / ECO**

## RIDER CAPACITY



Weight capacity 600 lb / 272 kg

## DIMENSIONS

Fuel capacity	15.9 US gal / 60 L
Length (bumper to bumper)	135.9" / 345.1 cm
Width	49.4" / 125.5 cm
Weight (dry)	824 lb / 374 kg (GTX LIMITED 230) 847 lb / 385 kg (GTX LIMITED 300)
Storage capacity	27 US gal / 102.5 L

## ENGINE

Type	Rotax <sup>®</sup> 1500 HO ACE™ Rotax <sup>®</sup> 1630 ACE™
Intake system	Supercharged with external intercooler
Displacement	1,494 cc (1500 HO ACE™) 1,630 cc (1630 ACE™)
Cooling	Closed-Loop Cooling System (CLCS)
Reverse system	Electronic iBR <sup>®</sup>
Starter	Electric
Fuel type	87 octane – minimum 91 octane – recommended for GTX Limited 300



DIRECT ACCESS FRONT STORAGE<sup>2</sup>



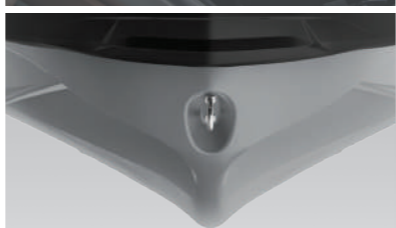
BRP AUDIO PREMIUM



SWIM PLATFORM WITH INTEGRATED LinQ™ SYSTEM<sup>3</sup>



WATERTIGHT PHONE BOX<sup>4</sup>



ST<sup>3</sup> HULL™



EXCLUSIVE LIMITED PACKAGE

## ENGINE

1,494 cc or 1,630 cc four-stroke, Rotax<sup>®</sup> engines with maintenance-free supercharger<sup>1</sup>, external intercooler and the Advanced Combustion Efficiency (ACE™) technology. The Rotax<sup>®</sup> 1500 HO ACE™ is optimized for regular fuel, and is faster and more powerful than its predecessor, but just as fuel efficient, while the Rotax<sup>®</sup> 1630 ACE™ is the most powerful Rotax<sup>®</sup> engine ever, delivering high efficiency and amazing acceleration.

iTC™ (Intelligent Throttle Control) system Operating electronically, this advanced throttle system starts you in neutral for easier dockside starts. It also features activity-specific Touring, Sport and ECO<sup>®</sup> modes that can all be set to accommodate your riding style. The result is a more responsive, more intuitive ride.

iControl<sup>®</sup> Learning Key™ The programmable Learning Key allows you to limit the performance of the PWC based on rider skill-level.

D-Sea-Bel™ system Combines a series of resonators and vibration-absorbing components to make Sea-Doo watercraft some of the quietest on the water.

Closed-Loop Cooling System Uses coolant to keep the engine running at the ideal temperature, much like a car's radiator. Also keeps out corrosive saltwater and debris.

## FEATURES

iControl<sup>®</sup> The "Brain" that integrates and controls all systems to create the best possible ride.

ST<sup>3</sup> Hull™ The new benchmark for rough water handling, the fully redesigned ST<sup>3</sup> hull™ is wider, for industry-leading stability at both rest and high speeds and expertly tuned to improve offshore performance.

Touring Mode / Sport Mode Offers a choice between two throttle responses for different riding styles. Touring mode is the default setting offering a more progressive acceleration curve for a more confident ride – ideal for cruising and 2-up riding. Sport mode can be easily activated using the Sport button. It provides full acceleration performance for a more aggressive throttle response.

ECO<sup>®</sup> Mode This iTC™ function automatically determines the most economical power delivery and sets the optimal RPM for greatest fuel economy.

Ergolock™ Seat with Stepped Design Seat with narrow profile and knee support that lets riders sit in a more natural position and leverage their leg muscles to hold on to the machine for more control and less upper body fatigue. Also featuring a stepped design for more comfort and better visibility to passengers.

RF D.E.S.S.™ Key With radio frequency technology and a ball-and-socket design, the Digitally Encoded Security System (D.E.S.S.) key provides riders with easy and quick starts every time.

New Reboarding Ladder Now deeper and wider, it makes reboarding from the water easier and quicker.

Direct Access Front Storage Gear is now within arm's reach. The industry's first direct-access front storage opens by simply raising the handlebar assembly. No standing required.

Watertight Phone Box Compartment Waterproof and shockproof phone compartment

Interactive Multifunction Digital Information Center Cruise control, Slow mode, VTS™, Fuel level, Tachometer, Speedometer, Hour meter, Compass, Clock, Touring mode, Sport mode, ECO<sup>®</sup> mode, F-N-R indicator and more.

BRP Audio Premium The industries first fully-integrated waterproof Audio System will keep the party going anywhere you do, with 100 watts of total system power, fully-waterproof performance, Bluetooth<sup>1</sup> connectivity, and external playback controls to ensure the perfect song is always on deck.

LinQ™ Attachment System Exclusive quick-attach system on the swim platform allows for easy installation of storage accessories.



©2017 Bombardier Recreational Products Inc. (BRP). All rights reserved.™, ® and the BRP logo are trademarks of Bombardier Recreational Products Inc. or its affiliates. Products are distributed in the USA by BRP US Inc. †GTX is a trademark of Castrol Limited used under license. Performance number in metric horsepower achieved under optimal testing conditions. Because of our ongoing commitment to product quality and innovation, BRP reserves the right at anytime to discontinue or change specifications, price, design, features, models or equipment without incurring any obligation. Printed in Canada. ‡ Based on BRP internal testing. † Larger storage front bin organizer is not included. ‡ RXT-X 300 MY18 swim platform shown. \* Cell phone not included. † Inspect supercharger every 200 hours (irrespective of the number of years) when the vehicle is used in intense conditions such as off-shore riding, continuous operation at wide open throttle, etc. ‡ Bluetooth is a registered trademark owned by the Bluetooth SIG, Inc. and any use such marks by BRP is under license.

# GTX LIMITED 230 / 300



## FEATURES CONTINUED

Handgrips with Palm Rest	Swim Platform Carpet with Wood Pattern
Sponsons	Integrated Cleats
Bumpers	Large Swim Platform
Wide-Angle Mirrors	Seat Strap
Luxury Front Grill	Quick Latch Fuel Filler Design
Tilt Steering	Dual Drain Plugs
Footwell Carpets	Flush Kit
USB Charger	Emergency Floating Lanyard
Split Seat (2 parts)	Operator's guide, instructional video and booklet
Ski Tow Eye	
Reboarding Handle on Rear Platform	

## PROPULSION SYSTEM

iBR <sup>®</sup> (Intelligent Brake & Reverse) system	First and only true brake on a watercraft recognized by the U.S. Coast Guard for improving boating safety since 2009. Now in its 3 <sup>rd</sup> generation, the intuitive and improved iBR <sup>®</sup> allows you to stop close to 160 feet sooner <sup>1</sup> for greater peace of mind. All with the squeeze of a lever. And with its electronic reverse, it gives you a level of maneuverability that makes docking easier.
Stainless Steel Impeller	Delivers improved acceleration, higher top speed and less cavitation.

## LIMITED PACKAGE

High-performance VTS™ (Variable Trim System)	The VTS™ adjusts the angle of the nozzle to change the behavior of the watercraft and improve parallelism to the water. The high-performance VTS™ provides handlebar-activated for quick settings.
Additional Gauge Functions	Depth finder, Altitude indicator, Water temperature.
Soft Knee Pad	Soft knee pad designed to provide extra comfort.
Dry Bag	Keeps contents dry and converts to backpack when removed.
Safety Equipment Kit	Contains all the essential safety equipment.
Storage Bin Organizer	Provide smart storage with cup holders.
Watercraft Cover	Protect your PWC.
Exclusive Coloration	

## OPTIONS / ACCESSORIES

LinQ™ Cooler	Bilge Pump Kit
LinQ™ Fuel Caddy	Sandbag Anchor
LinQ™ Retractable Ski Pylon	Fire Extinguisher
Wakeboard Rack	Snap-in Fenders and Installation Kit
Ski Module	Trailer Move
12-Volt Outlet and Installation Kit	

## WARRANTY

BRP limited warranty covers the watercraft for one year.

**SEA-DOO**

